

Fall Protection: Know the Risks. Know the Solution.

A quick, practical guide to fall protection based on ISEA's Fall Protection Use & Selection Guide



Get the Facts



600+

Workers Killed by falls in 2024.

Source: BLS



7x

Higher risk of a fatal fall for construction workers.

Source: NSC



\$15B

Annual cost of injuries from occupational falls.

Source: Liberty Mutual



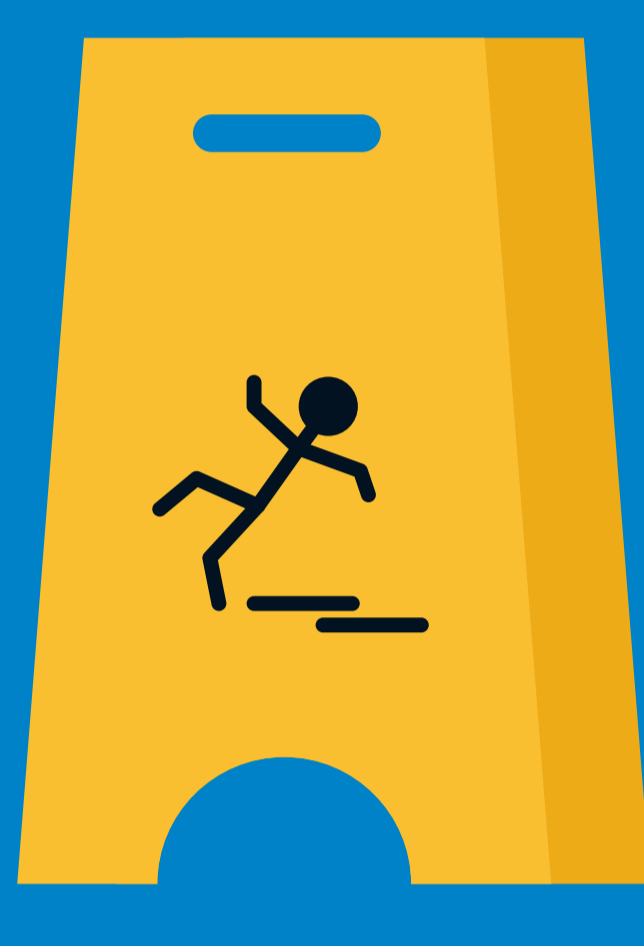
45M+

Workers Protected by fall protection PPE in the U.S.

Source: ISEA

Start Here: The Hierarchy of Fall Protection

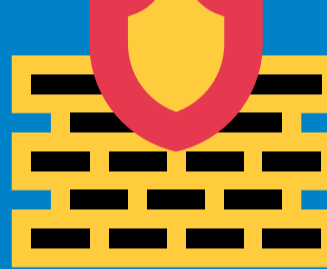
The most effective fall protection programs prioritize eliminating hazards, preventing falls, and ensuring the use of protective equipment.



Level 1:

Eliminate the Hazard

Design the risk out of the job whenever possible.



Level 2:

Prevent the Fall

Use guardrails, barriers, covers and scaffolds to stop falls before they happen.



Level 3:

Protect the Worker

Use personal fall protection equipment when hazards cannot be eliminated or prevented.

Did You Know?

Falls remain one of the leading causes of workplace fatalities but most are preventable with proper planning, training, and equipment.



The ABCs of Fall Protection

Every effective fall protection system includes these three components:

A — Anchorage

A secure point of attachment that supports the system.

B — Body Support

A full-body harness that distributes forces safely across the body.

C — Connecting Device

Lanyards, lifelines, or retractables that connect the worker to the anchorage and control fall forces.

ALL THREE MUST WORK TOGETHER TO PROVIDE PROPER PROTECTION

Get the Full Fall Protection Guide

Access ISEA's complete Fall Protection Use & Selection Guide for detailed guidance on selecting, using, inspecting and maintaining fall protection systems.



Scan to download the free guide